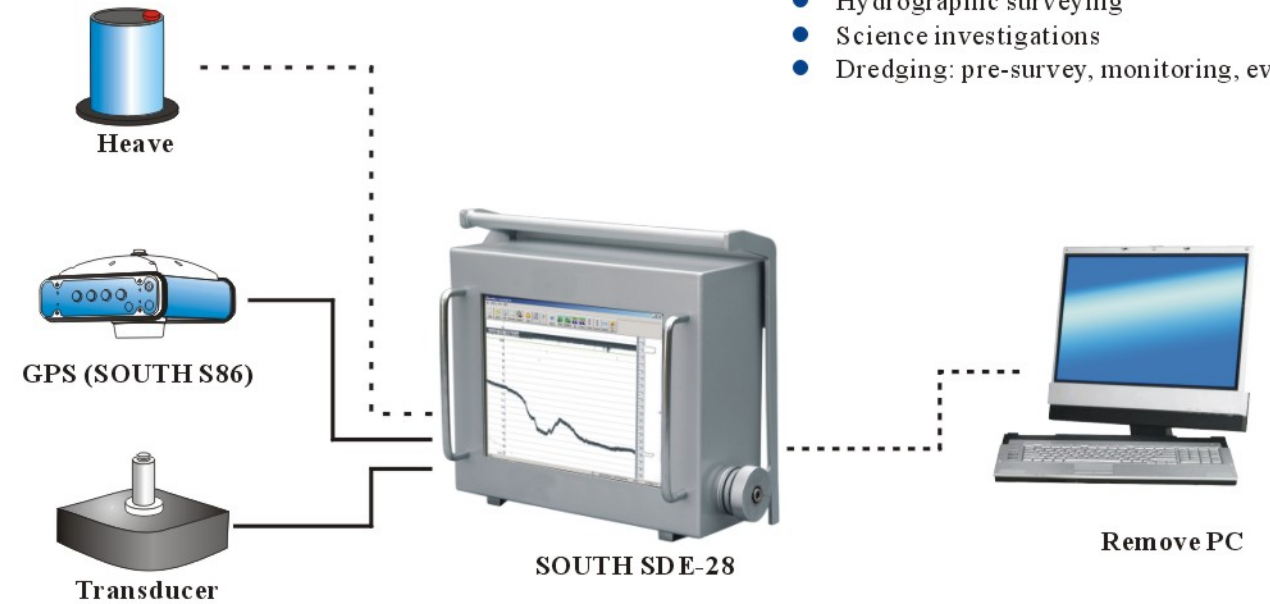


Unique features:

- Embedded XP® operation
- High performance and easy operation
- Stainless steel shell makes processor rugged and reliable
- Built-in navigational software and data storage
- 12.1-inch color LCD display featuring a wide viewing angle and adjustable brightness
- Interface - GPS, 32 Grey scale printer, heave and other navigational equipment
- Especial clear pulse and echo threshold ensure reflecting the underwater landform really
- Support communication with NMEA-0183 GPS receivers to gain orientation information.
- Depth data for last 24 hours in memory to play back the past sounding information
- Rugged display housing is adjustable in 180 degree to get a fit viewing angle of display

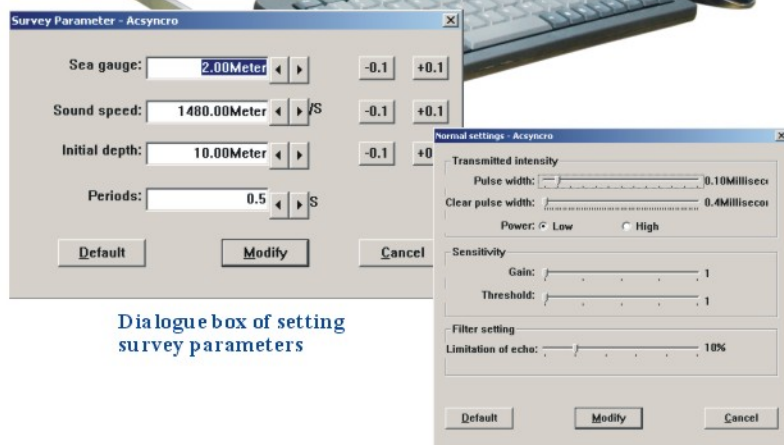
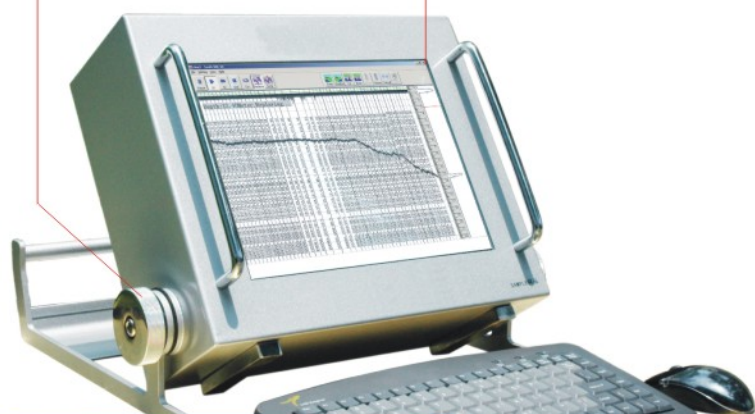


Operational Areas:

- Hydrographic surveying
- Science investigations
- Dredging: pre-survey, monitoring, evaluation

Rugged processor and adjustable display housing

12.1-inch color LCD



Dialogue box of setting survey parameters

Dialogue box of setting equipment parameters

Technical Specifications:

- Frequency: 200kHz
- Beam Angle: 7°
- Depth Display: 12.1-inch color LCD
- Output Power: up to 200w
- Depth Resolution: 1cm
- Accuracy: +/-0.1% of water depth
- Sound Velocity: 1300-1650 m/s
- Depth Range: 0.39-220 m
- Draft: 0-9.9 m
- Pulse Length: Automatically selected, with operator override
- Serial Ports: two RS-232 ports, baud rate 1200-115200
- Connection: Pinter connection
USB connection (2x)
- Keyboard and mouse connection
- Power Supply: 9-18V DC, less than 25 W
110~230V AC (optionally)
- Operating Conditions: -30° - 60° C
- Dimensions: 34cm x 30cm x 15cm
- Weight: 11.5 kg

SDE-18

PORTABLE ECHOSOUNDER Model SDE-18+

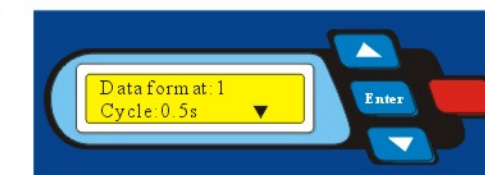


Technical Specifications:

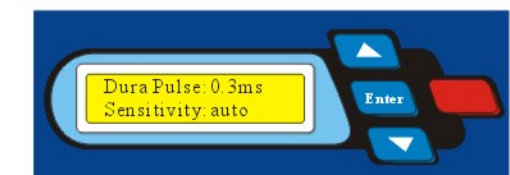
- Frequency: 208kHz
- Beam Angle: 10°
- Depth Display: LCD display
- Output Power: up to 100w
- Depth Resolution: 1cm
- Accuracy: +/-0.1% of water depth
- Sound Velocity: 1400-1600 m/s (adjustable)
- Depth Range: 0.39-120 m
- Draft: 0-9.9 m (adjustable)
- Pulse Length: Automatically selected, with operator override
- Output Ports: RS-232 ports, baud rate 1200-115200
- Power Supply: 11.2-13.5V DC, less than 2 W
- Operating Conditions: -30° - 60° C
- Dimensions: 196mm x 150mm x 60mm
- Weight: 2.2 kg



Display depth and draft



Various output format and record depth every 0.5 second



Automatic sensitivity and adjustable pulse length