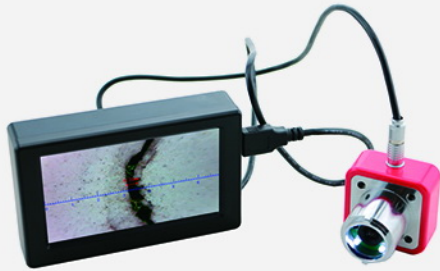


# JW-CK102

## Crack Width Gauge

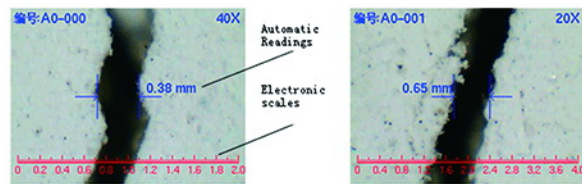


### Features

1. Automatically show the crack width on the screen.
2. Automatically take the crack photos. (real-time image display on the screen)
3. Stored photos and all data can be reviewed;
4. Probe (camera) comes with lighting fixtures can work in dim light;
5. Simple alignment of cracks can be automatically reading, without any set up, easy operation;
6. Crack photo as a standard BMP format, directly save to any Udisk/ SD card;
7. The camera function could catch all test information in time including crack images, test value and zoom images;
8. Host and the probe share one rechargeable lithium battery.
9. Reference specification: JGJ125-99 "dangerous building appraisal standards.

### Brief Introduction

JW-CK102 series crack width gauge can be widely used in bridges, tunnels, buildings, concrete pavement, metal surface crack width testing.



Photos cracks images

### The main technical parameters

The maximum detection range	0-6mm
Accuracy	better than 0.01mm
Magnification	40times
The Operating Temperature	-20 ~ 60 ° C
Host Interface	standard USB
The storage	can be stored for more than 3000 photos (SD Card is free to expand)
Image storage format	BMP format 24 bit color 320×240
Power supply	lithium battery, standby time: 18 hours
Size	Host 113x70x16.5mm
Probe	48x56x58mm
Weight	host 100 grams, 100 grams of the probe

### Standard Delivery

Main Unit	1
Probe (with 1.5 m cable)	1
Quick charger	1
Blowing balloon	1
Aluminum carrying case	1
Manual and warranty card	1
Software	1